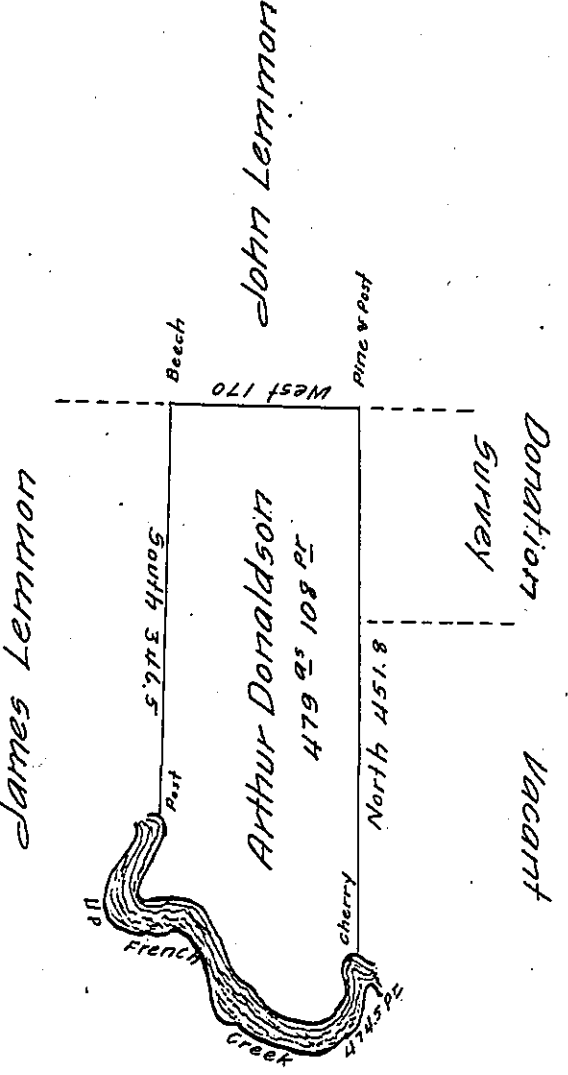


River Courses beg 2.

S. 71° E.	55
South	10
S. 32 W.	62
S. 27 E.	19
N. 55 E.	36
N. 81 E.	16
S. 12 E.	12
S. 61 W.	12
S. 25 1/2 W.	25
S. 48 E.	19
N. 61 E.	32
S. 23 E.	54
S. 46 E.	28
S. 63 1/2 E.	26
S. 76 E.	35
N. 49 E.	20
N. 11 1/2 W.	36
N. 19 1/2 E.	19
S. 75 E.	8
<u>Perches</u>	<u>474.5</u>



Situate on and adjoining the West side of French Creek in Allegheny County containing 479 Acres 108 p & allowance of six p Cent for Roads &c. Resurveyed 11th February 1799. In pursuance of a Warrant of 400^{acs} granted to Arthur Donaldson Bearing date 30th May 1792. [It being the same tract surveyed 29th November 1795 for William Lemmon in pursuance of his Improvement dated 12th June 1795

John Power D.L. 5 E

To Daniel Brodhead Esquire
Surveyor General

IN TESTIMONY that the above is a copy of the original remaining on file in the Department of Internal Affairs of Pennsylvania, made conformably to an Act of Assembly approved the 16th day of February, 1833, I have hereunto set my Hand and caused the Seal of said Department to be affixed at Harrisburg, this tenth day of August 1904

Joseph B. Power
Secretary of Internal Affairs.